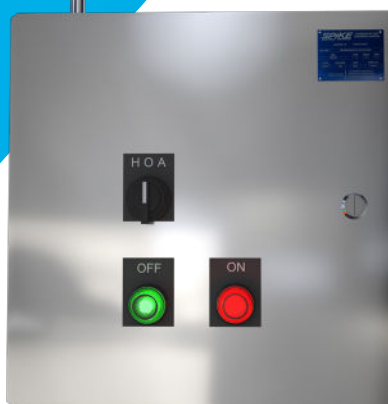




SN4XLC Lighting Contactors



SN4XLC lighting contactors by Spike Electric Controls represent a cutting-edge solution in the field of electrical control and automation. These state-of-the-art contactors have been meticulously designed to offer unparalleled reliability and precision when it comes to managing lighting systems. With advanced features like remote control capabilities, robust construction, and seamless integration with modern control systems, SN4XLC lighting contactors provide users with the utmost convenience and efficiency in managing their lighting infrastructure. Whether it's for commercial, industrial, or residential applications, these contactors exemplify Spike Electric Controls' commitment to delivering high-quality solutions for the ever-evolving world of electrical control and automation.



SN4XLC

Lighting Contactors

EATON

BY **SPKE**
ELECTRIC CONTROLS



Standard ECP Configuration Includes:

- 012128 enclosure with gland plate, hinges, & earth/ground stud
- Internal neutral and ground bar
- Electrically held modular lighting contactor
- Lamacoid nameplates are standard for all operator positions and stainless nameplates are available upon request

Electrical Ratings:

- Voltage: 600V
- Coil voltage: 120V
- Amperage: 30A
- Number of poles: 1-12 standard

Certifications & Compliances:

- A globally certified enclosure and termination solution for Type 3S and 4X applications
- Certified to the impact, thermal and IP66 ingress requirements of EN 60079-
- Type Nema 1,12,3R,4,
- 4X, 4X non-metallic



- UL Listed
- cUL Listed
- ABS Type Approved
- OSHPD Certified (OSP)

Applications:

- Areas requiring safe and efficient variable lighting control
- Damp, wet, dirty, dusty areas where ultimate corrosion and ingress protection is required
- Harsh environments, including: refineries, chemical and petrochemical plants, corrosive process facilities, food and beverage, marine and mining

Features and Benefits:

- Variable lighting control utilizing manual on/off or automatic settings
- Photocell option provides maximum utilization of sunlight for energy conservation
- Modular lighting contactor design provides flexibility to add future power poles
- Lighting contacts are electrically held for superior performance
- Power poles convert from NO to NC with a simple 180° turn

SN4XLC Lighting Contactors from Spike Electric Controls Business provide efficient use of power, greater utilization of daylight and automated control in the most extreme harsh locations while extending lighting lifetime.

Options:

Options:	Suffix:
Terminal block**	TB
Timer**	TR
EV2IH20 photocell (120V)	PC1
EV2IH208 277 photocell (208-277V)	PC2
Epoxy finish (external)	S752
Epoxy finish (internal and external)	S753
Lamacoid nameplate	LID
Heater	R11
Std. Drain	S756
Std. Breather & Drain	S756V

Mounting Options:

- Enclosure is mounted using four heavy duty, 3mm thick, surface welded stainless steel lugs
- Bottom lugs are slotted for ease of mounting, providing a secure, reliable means of mounting the enclosure
- Available in vertical (North American) or horizontal (metric) positions

Improved Sealing:

- Available with up to 4 gland plates (3mm thick) on each side
- Five possible combinations of 0, 1, 2, 3 or 4 gland plates available
- Gland plates secured via riveted nutserts for improved sealing





SN4XLC

Lighting Contactors

EATON

BY **SPKE**
ELECTRIC CONTROLS

One-Piece Gasket:

High integrity one-piece silicone sealing gasket provides an IP66 rating and excellent recovery and re-sealing properties for continuous environmental protection

Quarter Turn Lock:

1. Standard cover features a 1 / 4 turn keyed lock fastening mechanism that provides a rapid means of achieving an IP66 rated seal for reliable environmental protection
2. Bolted cover and pad-lockable cover also available



Green Energy Efficient: SN4XLC

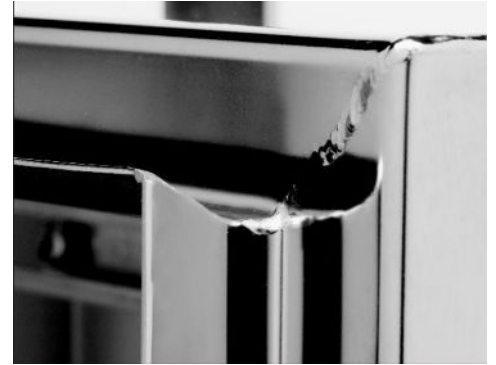
lighting contactors by Spike Electric Controls are exceptionally energy-efficient due to their intelligent design and functionality. These contactors are equipped with advanced scheduling and automation features, allowing precise control over lighting schedules and usage patterns. By optimizing when and how lights are powered, they minimize unnecessary energy consumption and reduce overall operational costs. Additionally, they are often compatible with energy-efficient lighting technologies such as LED fixtures, further enhancing their efficiency. Moreover, the contactors are designed to minimize power losses, ensuring that a minimal amount of electricity is wasted during operation. This commitment to energy efficiency makes SN4XLC lighting contactors a sustainable choice for any application, contributing to both cost savings and environmental conservation.

Earth/Ground Stud Assembly:

- External and internal stainless steel earth/ground stud assembly enables rapid and reliable protective earth/ground connection
- Mounted on the side of the enclosure

Integral Drainage Channel:

- Integral drainage channel prevents liquids or other solid contaminants from running in or falling into the enclosure when the door is opened
- Minimizes gasket path contamination for ease of access





SN4XLC

Lighting Contactors

EAT•N

BY **SP•KE**
ELECTRIC CONTROLS

Part number example

SN4XLC 30 A 6-SXAB-39X0708 S752

SN4XLC Lighting Contactor, 30A, 120V, 6 pole, HOA 3-position switch in position 1, no operator in position 2, red pilot light in position 3, green pilot light in position 4, HOA DSL in position 1, no DSL in position 2, ON DSL in position 3, OFF DSL in position 4, epoxy finish (external).

Amps = 30A

POLES	120V	POLES	120V
2	SN4XLC30A2	8	SN4XLC30A8
3	SN4XLC30A3	9	SN4XLC30A9
4	SN4XLC30A4	10	SN4XLC30A10
5	SN4XLC30A5	11	SN4XLC30A11
6	SN4XLC30A6	12	SN4XLC30A12
7	SN4XLC30A7		

Base Catalog Number Operators Nameplates Options

SN4XLC 30 A 6 - SXAB - 39X0708 S752

Amperage	
30	30a
60*	60A
100*	100A

Coil Voltage	
A	120V
B	208V*
C	240V*
D	480V*
E	600V*

Poles	
2	9
3	10
4	11
5	12
6	16
7	20
8	24

Options	
TB	Terminal Block**
TR	Timer**
PC1	EV2IH Photocell (120V)
PC2	EV2IH208 277 Photocell (208-277V)
S752	Epoxy Finish (External)
S753	Epoxy Finish (Internal and External)
R11	Heater
LID	Amacoid Nameplate
S756	Std. Drain
S756V	Std. Breather & Drain

Select One Operator Symbol for Each of the Four Positions

The first operator is in position 1, second operator in position 2, etc.
NOTE: If no operator is required, use the symbol X.

- A Pilot Light - Red (19534EMP009-J1)
- B Pilot Light - Green (19534EMP009-J3)
- C Pilot Light - Amber (19534EMP009-J6)
- G Single Pushbutton - Black (19534EMP019)
- Q 2-Position Switch (19534EMP049)
- S 3-Position Switch (19534EMP069)
- X No Operator

Select One Operator Symbol for Each of the Four Positions

The first operator is in position 1, second operator in position 2, etc.
NOTE: If no operator is required, use the symbol X.

- 05 Start (DSL05)
- 06 Stop (DSL06)
- 07 On (DSL07)
- 08 Off (DSL08)
- 29 Hand Auto (DSL29)
- 37 Start-Stop (DSL37)
- 39 Hand Off Auto (DSL39)
- 48 Off-On (DSL48)
- X No Operator



Photocells are shipped separate for field installation.

* Additional configurations are available upon request. Please contact Customer Service for details.

** Timer and/or terminal block will require a larger enclosure.