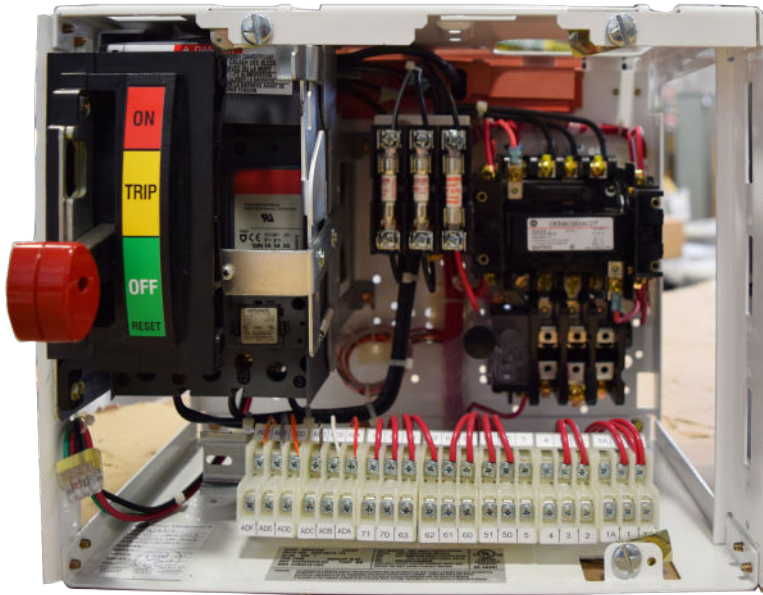


# MCC BUCKETS

Quick Ship Custom  
Electrical Controls



*Spike Electric Controls is a value added custom MCC Bucket manufacturer.  
We are not a reseller of any loose MCC components or empty buckets.*



## Manufacturers:

### Eaton

- Freedom 2100
- Freedom Unitrol
- 9800 Unitrol
- F10 Unitrol
- Advantage 2100
- Five Star Series 2100
- 11-300
- Type W

### General Electric

- 7700 Series
- 8000 Series
- E9000 Evolution

### Square D

- Model 3
- Model 4
- Model 5
- Model 6

### Allen Bradley

- Center Line 2100

### Siemens

- Allis Chalmers Marq 21
- Allis Chalmers Marq 1
- Allis Chalmers Marq 2
- Model 90
- Model 95
- TIASTAR & 95+
- System 89
- Class 89

Note: NEMA size and spacing can vary depending on starter unit. Refer to the catalogs for each manufacture.

## Feeder Units:

- Breaker: 15–600 Amps
- Fusible: 30–600 Amps

## New Units Supplied With

- New Stabs
- New Steel Wrapper
- New Door
- Mounting Hardware

## Options Obsolete Remanufactured Units

- Pushbuttons



## Custom Bucket Types

- MCCBuckets
- MCC Repair and Maintenance
- MCC Testing
- MCC Bucket Conversion \*Upgrading from Motor Starters to VFD's or Soft Starters\*
- Mcc New and Obsolete Component Replacement
- Direct Replacements for Obsolete MCC
- Nema Size 00-6
- Fvnr Starter Buckets
- IEC Starter Buckets
- FVR Starter Buckets
- VFD Buckets
- Soft Start Buckets
- Contactor Type Buckets
- Fused Feeder Buckets
- Breaker Feeder Buckets
- Pilot Lights
- Selector Switches and more...

*Spike Electric Controls is a value added custom MCC Bucket manufacturer.  
We are not a reseller of any loose MCC components or empty buckets.*



# MCC BUCKETS

Quick Ship Custom  
Electrical Controls



Ordering Information / Part Number Example  
**SFZ A1003 E A S C SP10 SP11**

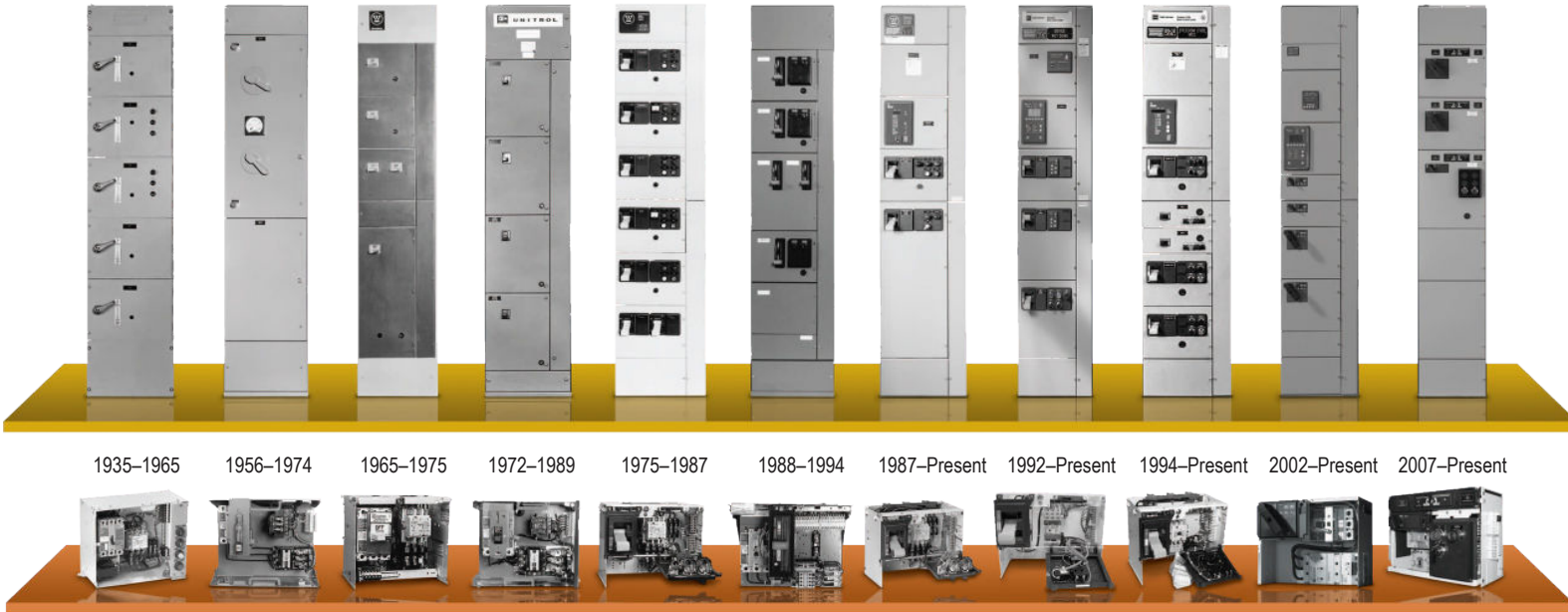
<b>SFZ</b>		<b>A1003</b>		<b>E</b>		<b>A</b>		<b>S</b>		<b>C</b>		<b>SP10 SP11</b>	
<b>MCC Type Catalog Codes</b>		<b>Service Voltage</b>		<b>Control Voltage</b>		<b>Space Option</b>		<b>CPT</b>					
SFZ	Freedom 2100	A	120V	A	120V	S	Standard	C	CPT				
SFS	Series 2100/5 Star	B	208V	B	208V	C	Compact	S	Separated Source				
SFD	Freedom Unitrol	C	240V	C	240V	O	Oversized						
SFR	F10 Unitrol	D	380V	D	380V								
SFT	Type W	E	480V	E	480V								
SFN	9800 Unitrol	F	575V	F	575V								
SFJ	11-300												
SFM	IT												
SSZ	Flashgard												
GD	Ite 5600												
GE9000	GE 9000 Evolution												
GE8000	GE 7700/8000												
GE7098	GE 7098												
AB2100	Allen-Bradley Centerline 2100												
AB789	Allen-Bradley 789												
FP	Federal Pacific												
PW	Powell												
SQ6	Square D Model 6												
SQ5	Square D Model 5												
SQ4	Square D Model 4												
SQ3	Square D Model 3												
ST	Siemens Tiastar												
S95+	Siemens Model 95+												
S95	Siemens Model 95												
S90	Siemens Model 90												
F89	Furnas System 89												
SA21	Siemens-Allis Marq 21												
ACM2	Allis-Chalmers Mark 2												
I56	Ite Gould 5600												
FC89	Furnas Class 89												
ACM1	Allis-Chalmers Mark 1												
I96	ITE Gould 9600												
SV	Sylvania/Clark												
		<b>Starter Type</b>											
		<b>FNVR HMCP</b>						<b>FEEDERS (Single-Sf/ Dual-Df)</b>					
		A1003	Nema Size 1, 3 amp	SF	DF								
		B1007	Nema Size 1, 7 amp	SF15	DF15	15 amp							
		C1015	Nema Size 1, 15 amp	SF20	DF20	20 amp							
		D1030	Nema Size 1, 30 amp	SF25	DF25	25 amp							
		E2050	Nema Size 2, 50 amp	SF30	DF30	30 amp							
		F3100	Nema Size 3, 100 amp	SF35	DF35	35 amp							
		G4150	Nema Size 4, 150 amp	SF40	DF40	40 amp							
		H5250	Nema Size 5, 250 amp	SF45	DF45	45 amp							
		<b>FNVR FUSED DIS</b>											
		H1003	Nema Size 1, 3 amp	SF50	DF50	50 amp							
		I1007	Nema Size 1, 7 amp	SF60	DF60	60 amp							
		J1015	Nema Size 1, 15 amp	SF70	DF70	70 amp							
		K1030	Nema Size 1, 30 amp	SF80	DF80	80 amp							
		L2050	Nema Size 2, 50 amp	SF90	DF90	90 amp							
		M3100	Nema Size 3, 100 amp	SF100	DF100	100 amp							
		N4150	Nema Size 4, 150 amp	SF125	DF125	125 amp							
		O5250	Nema Size 5, 250 amp	SF150	DF150	150 amp							
		<b>FNVR FUSED DIS</b>											
		1003H	Nema Size 1, 3 amp	SF175	DF175	175 amp							
		1007I	Nema Size 1, 7 amp	SF200	DF200	200 amp							
		1015J	Nema Size 1, 15 amp	SF225	DF225	225 amp							
		1030K	Nema Size 1, 30 amp	SF250	DF250	250 amp							
		2050L	Nema Size 2, 50 amp	SF300	DF300	300 amp							
		3100M	Nema Size 3, 100 amp	SF350	DF350	350 amp							
		4150N	Nema Size 4, 150 amp	SF400	DF400	400 amp							
		5250O	Nema Size 5, 250 amp	SF450	DF450	450 amp							
								<b>Modification</b>					
								SB10	Breaker Shunt Trip—120v				
								SB11	Breaker Auxiliary Switch—1no/1nc				
								SB19	Breaker Auxiliary Switch—2no/2nc				
								SC10	Control Fuse Wired for Separate Source in Lieu Of Cpt				
								SC11	Control Fuse/Disconnect For Separate Source In Lieu of Cpt				
								SC12	Cpt 100va for Size 1 & 2 Starters, Fused				
								SC13	Cpt 150va fFor Size 3 & 4 Starters, Fused				
								SC18	Full Capacity Cpt for Size 5 Starters, Fused				
								SM12	Mini Elapsed Time Meter				
								SM16	Iq-200 Meter with 3 Cts				
								SO19	Overload Relay Heater/Heater Pack				
								SO20	Cep7 Solid State Overload Relay—Size 1				
								SP10	Red 'Run' Light				
								SP11	Green 'Stopped' Light				
								SP15	Red 'Run' Push-To-Test Light				
								SP16	Green 'Stopped' Push-To-Test Light				
								SP20	Special Function Light				
								SP32	'Start/Stop' Pushbutton				
								SP35	'On/Off' Pushbutton				
								SP36	'Forward/Reverse/Stop' Pushbutton				
								SP38	'Fast/Off/Slow' Pushbutton				
								SP41	Special Function Pushbutton				
								SP50	'On-Off' Selector Switch				
								SP53	'Start-Stop' Selector Switch				
								SP55	'Forward-Reverse' Selector Switch				
								SP56	Special Function 2-Position Selector Switch				
								SP57	'Hand-Off-Auto' Selector Switch				
								SP58	'Local-Off-Remote' Selector Switch				
								SP59	'Fast-Off-Slow' Selector Switch				
								SP60	'High-Off-Low' Selector Switch				
								SP61	Special Function 3-Position Selector Switch				
								SR23	D15 4-Pole Control Relay				
								SS11	1no-1nc Starter Auxiliary Contacts				
								SS22	2no-2nc Starter Auxiliary Contacts				
								ST9	Pull-Apart Type Terminal Blocks (Standard On All Vintages Except Type W And 11-300)				
								SU10	Surge Suppressor On Coil				
								SU11	Type Sis Control Wire				
								SU14	Wiremarkers—Sleeve Type On All Control				

# MCC BUCKETS

Quick Ship Custom  
Electrical Controls



## Motor Control Center Solutions:



1935-1965    1956-1974    1965-1975    1972-1989    1975-1987    1988-1994    1987-Present    1992-Present    1994-Present    2002-Present    2007-Present

### Specifications

Description	Westinghouse® 11-300	Cutler-Hammer® HammerT®		Cutler-Hammer F10 Unitrol	Westinghouse 5 Star	Cutler-Hammer Freedom Unitrol
Starter Type	11-200 Life-Line Type N	3 Star	A200 or 11-200	Citation	A200	Freedom Series
Breaker Type	F/FA	FA	FB/MCP/FA	MCP/FS/FB/FH/FA	Non-Series CT MCP/FB	HMCP/HFD/FS/FH/FDC
Door Width	20"	19 3/8"	13 3/8"	14 3/4" With Wireway 19 1/2" Without Wireway	15 5/8"	15 1/2"
Bucket Width	15 3/4"	16 1/8"	11 3/4"	14"	13 3/4"	13 7/8"
Vertical Space Increments	9 1/3", 14" Increments	9 1/3", 14" Increments	6" Increments	6" Increments	6" Increments	6" Increments
Paint	ANSI 61	ANSI 49	ANSI 49	ANSI 49	ANSI 70	ANSI 49
Handle Mechanism Type	Rotary Operator	Rotary Operator	Slider Type	Slider Type	Lever Type	Slider Type
FlashGard Upgrade Available	No	No	No	No	Yes	No

### Specifications Cont...

Description	Westinghouse Series 2100	Cutler-Hammer Advantage	Freedom 2100	IT. MCC	FlashGard
Starter Type	A200	Advantage	Freedom	IT.	Freedom
Breaker Type	Series C HMCP/HFD	Series C HMCP/HFD	HMCP/HFD	HMCP/HFD	HMCP/HFD
Door Width	15 5/8"	15 5/8"	15 5/8"	15 5/8"	15 5/8"
Bucket Width	13 3/4"	13 3/4"	13 3/4"	13 3/4"	13 3/4"
Vertical Space Increments	6" Increments	6" Increments	6" Increments	6" Increments	6" Increments
Paint	ANSI 61	ANSI 61	ANSI 61	ANSI 61	ANSI 61
Handle Mechanism Type	Lever Type	Lever Type	Lever Type	Rotary Operator	Rotary Operator
Flashgard Upgrade Available	Yes	Yes	Yes	Yes	Yes

### Other Manufacturers' Units:



ITE/Gould®  
5600 Series  
1957-1976

Square D®  
Model 5/Model 6  
1992-Present



General Electric®  
7700/8000  
1975-Present

Siemens®/Furnas  
Series 89  
1979-2001



Allen-Bradley®  
Centerline  
Series K and later  
1971-Present

FPE® 5325/5320  
1966-1978